

Report

Cabinet

Part 1

Date: 10 April 2024

Subject Key Stage 4 Outcomes 2023

Purpose This report provides members with final outcome data for Secondary schools within the Local Authority for 2022-2023 (Summer 2023).

Author Managing Director, Education Achievement service (EAS)

Ward All

Summary This year, for the first time since 2019, the Welsh Government are producing Key Stage 4 (KS4) All Wales Core Data Sets (AWCDS) at individual school level. Each of the last four years used essentially different methods for determining grades, so none are directly comparable. In 2023 national outcomes are lower than 2022, 2021 and 2020, but not as low as 2019. Provisional outcomes were available to schools, LAs and consortia in Provisional form in mid-November 2023 (via Data Exchange Wales (DEWi)). These then contribute to a school level checking process, so any errors could be addressed, before final versions were published on 20 December 2023. This report uses the final versions of outcome data for Newport schools describing it against a range of comparative indicators.

Proposal Members are requested to:

- Scrutinise the contents of the report and ask questions and offer views about overall school outcomes.

Action by to continue to provide support to secondary schools through the EAS Business Plan 2023-2025.

Timetable There is no specific timetable.

This report was prepared after consultation with:

- Chief Education Officer

Signed

Background

- 1.1 This year, for the first time since 2019, the Welsh Government are producing Key Stage 4 All Wales Core Data Sets (AWCDS) at individual school level. Each of the last 4 years used essentially different methods for determining grades, so none are directly comparable. In 2023 national outcomes are lower than 2022, 2021 and 2020, but not as low as 2019.
- 1.2 Provisional outcomes were available to schools, LAs and consortia in Provisional form in mid-November 2023 (via Data Exchange Wales (DEWi)). These were then used to contribute to a school level checking process, so any errors could be addressed, before final versions were published on 20 December 2023. This report uses the final versions.
- 1.3 Please note that whilst this final set of data has just become available, both LA and EAS colleagues have used provisional data and data provided by the school, from the start of Autumn Term 2023, to prioritise support at individual school level.

Welsh Government published measures for 2023

- 1.4 These include the following points-based measures:
 - The Capped 9 measure
 - Literacy measure (best of Language / Literature)
 - Numeracy measure (best of mathematics / numeracy)
 - Science measure (best of science)
 - Welsh Baccalaureate Skills Challenge Certificate measure
- 1.5 In addition to the above 'points based' measures the percentage of learners achieving 5 or more A*-A and percentage of learners achieving No Qualifications are also included.
- 1.6 As well as comparisons of All Pupils, comparisons are also made Male/Female and FSM/non-FSM for each of the indicators, but only Capped 9 comparisons are included in this report at LA level.
- 1.7 In terms of analysis the two main comparisons are the Welsh Government line of modelled outcomes, and a comparison with a 'family' of similar schools.

Families

- 1.8 Schools face different challenges based on their context. The AWCDS contains comparative outcomes against similar schools – known as 'Families'. Families (of 9-10 schools) have been created by grouping on size and linguistic delivery and then ordering schools according to the values of an index of 'challenge', calculated as follows:
 - 50% x the proportion of pupils of statutory school age eligible for Free School Meals (FSM)
 - 30% x the proportion of pupils of statutory school age who live in an area classed as in the 20% most deprived parts of Wales using the 2019 Welsh Index of Multiple Deprivation (WIMD)
 - 10% x the proportion of pupils of statutory school age subject to an Individual Development Plan (IDP) or with a statement of Special Educational Needs (SEN)

- 10% x the proportion of pupils of statutory school age who are either new to the English language (or Welsh where relevant), at an early acquisition stage or developing competence.

1.9 A three-year average of data from PLASC 2021-2023 is used.

1.10 For 2023 there are 6 Welsh medium families, numbered from 1 (the most disadvantaged) to 5 (the least disadvantaged). There are 15 English medium families numbered from 7 (the most disadvantaged) to 21 (the least disadvantaged).

Families with Newport Schools (2023)

Moved to a MORE disadvantaged Family (3 Schools)		
Moved to a LESS disadvantaged Family (2 Schools)		
6 Welsh Medium families (1-6)		
14 English Medium families (7-21)		
School Name	Family	'Disadvantage' Position within the family
Ysgol Gyfun Gwent Is Coed	001	1
Ysgol Gyfun Gymraeg Bro Edern		2
Ysgol Syr Hugh Owen		3
Ysgol Gymraeg Gwynllyw		4
Ysgol Uwchradd Aberteifi		5
Ysgol Gyfun Cwm Rhondda		6
Ysgol Gyfun Gymraeg Llangynwyd		7
Ysgol Gyfun Gymraeg Plasmawr		8
Ysgol Gymraeg Ystalyfera Bro Dur		9
Ysgol Gyfun Gymraeg Bryn Tawe		10
Cardiff West Community High School	007	1
Willows High School		2
Dylan Thomas Community School		3
Eastern High		4
Mary Immaculate High School		5
Llanwern High School		6
Cantonian High School		7
Christ the Word		8
Fitzalan High School		9
St. Illtyd's Catholic High School		10
Ferndale Community School	008	1
Idris Davies School 3 to 18		2
St Joseph's RC School and 6th Form Centre		3
Lliswerry High School		4
Maesteg Comprehensive School		5
Pencoedre High School		6
PEN-Y-DRE HIGH SCHOOL		7
Ysgol Bae Baglan		8
PENTREHAFOD SCHOOL		9
Cathays High School		10

The John Frost School		1	
Mountain Ash Comprehensive School		2	
Coedcae School		3	
Newport High School		4	
Abersychan Comprehensive	009	5	
HEOLDDU COMPREHENSIVE SCHOOL		6	
Rhyl High School		7	
Blessed Carlo Acutis Catholic School		8	
Bishop Vaughan School		9	
Aberdare Community School		10	
St Teilo's C-in-W High School		010	1
Cefn Saeson Comprehensive School			2
Cefn Hengoed			3
Abertillery Learning Community			4
St Julian's School	5		
Bedwas High School	6		
Cwmbran High School	7		
Ysgol Nantgwyn	8		
Brynmawr Foundation School	9		
BISHOP GORE SCHOOL	10		
Grango	013	1	
Milford Haven School		2	
St Joseph's RC High School		3	
Treorchy Comprehensive School		4	
Ysgol Clywedog		5	
Blackwood Comprehensive School		6	
Lewis Girls' Comprehensive School		7	
St. David's High School		8	
St John Lloyd Catholic Comprehensive School		9	
Flint High School		10	
Bishop of Llandaff Church in Wales High School	018	1	
Cwmtawe Community School		2	
WELSHPOOL HIGH SCHOOL		3	
Ysgol Gyfun Emlyn		4	
Caerleon Comprehensive School		5	
Haverfordwest High VC School		6	
Ysgol Aberconwy		7	
Argoed School		8	
Ysgol Friars		9	
Radyr Comprehensive School		10	
Ysgol Greenhill School	021	1	
THE MAELOR SCHOOL		2	
CARDIFF HIGH SCHOOL		3	
Crickhowell High School		4	
Gwernyfed High School		5	
Bassaleg School		6	
COWBRIDGE COMPREHENSIVE SCHOOL		7	

Stanwell School	8
BISHOPSTON COMPREHENSIVE	9

1.10 Newport LA has a Welsh medium school in the most socio-economically disadvantaged family. The English medium schools are spread across the range from most to least disadvantaged, but with 5 of the 8 English medium, in the most socio-economically disadvantaged half.

Capped 9 – all pupils – compared with the family average

1.11 The table below shows the Capped 9 performance of all learners compared with their individual family. Five schools are above their family, and four below.

School Name	Capped 9	Family Capped 9	Capped 9 - School-Family difference
Newport School	411.1	349.3	61.8
Newport School	390.2	367.3	22.9
Newport School	365.8	349.1	16.7
Newport School	405.0	393.0	11.9
Newport School	363.9	357.5	6.5
Newport School	402.1	419.5	-17.4
Newport School	332.1	353.4	-21.4
Newport School	307.9	331.5	-23.6
Newport School	314.9	349.1	-34.2

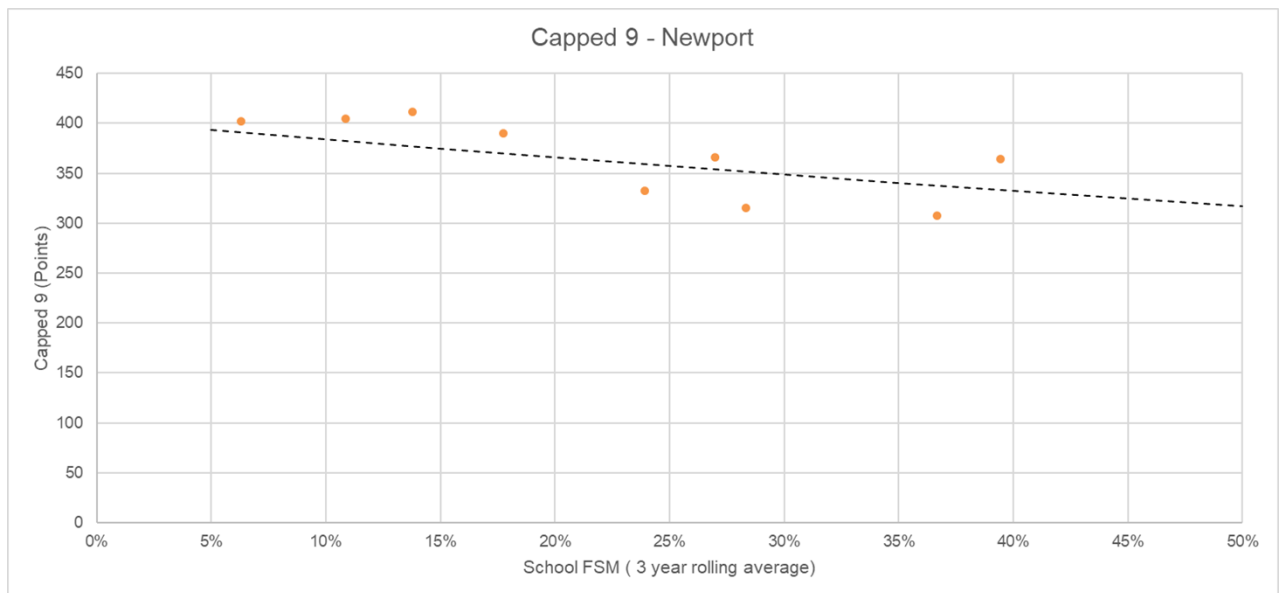
1.12 For all GCSE subjects the points difference between every grade is 6 points. So, for example a B is worth 6 more points than a C.

1.13 This means that for the Capped 9, a difference of 54 points indicates that on average, every learner in a school is performing above or below the family by a whole GCSE grade in every subject. (6 points x 9 subjects=54 points).

1.14 Please note that the indicative bars on the right for this table and all below are adjusted to the minimum (negative) and maximum (positive) values for each table individually and automatically. Therefor a bar '47.6 points' long will not be consistent across each chart.

Capped 9 – all pupils – compared with WG 'Modelled Outcome' line

1.15 The chart below does not compare with the family, but rather the Welsh Government 'Modelled outcome'.



1.16 Six schools in Newport are above the modelled outcome line and three below.

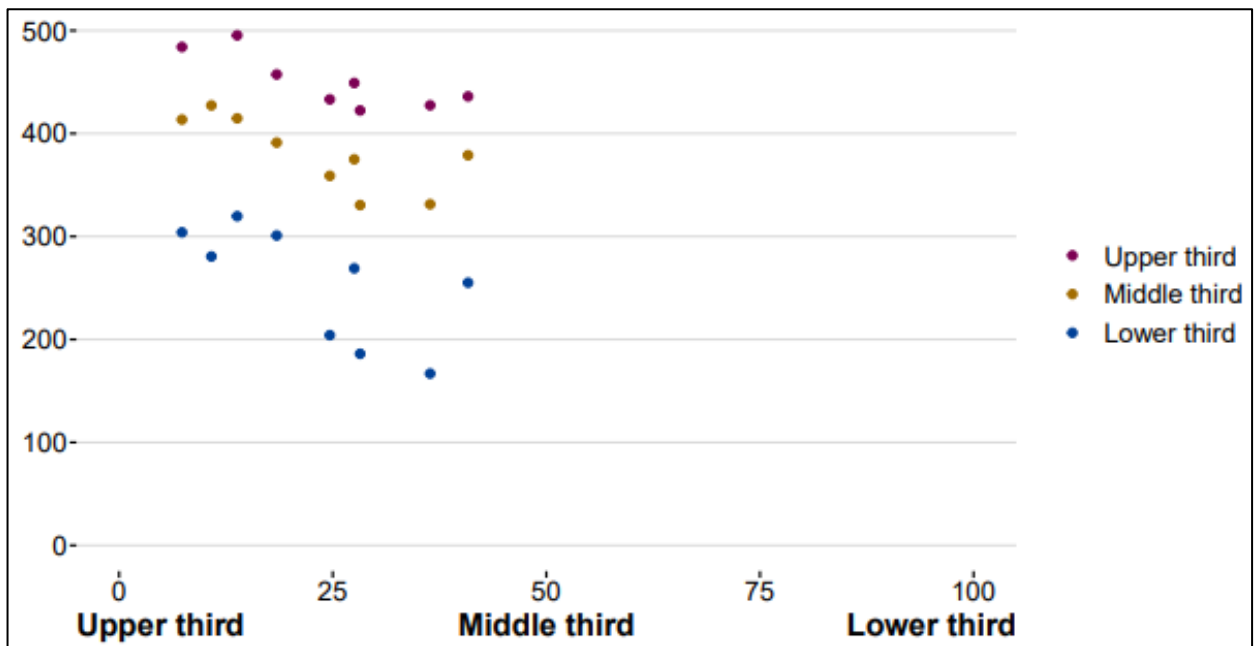
Capped 9 – Comparison by ‘Thirds’ with WG ‘Modelled Outcome’ line

1.17 The chart below groups learners in each individual school into ‘thirds’. For example if 120 learners in a cohort, they would be split into three groups of 40 by their Capped 9 scores. Three averages would then be calculated for each of these groups. The table below gives the average of each third.

School Name	Upper Third			Middle Third			Lower Third		
	Achieved	Modelled	+/-	Achieved	Modelled	+/-	Achieved	Modelled	+/-
Newport School	509	470	39	427	394	34	281	279	2
Newport School	495	466	30	415	390	25	320	271	48
Newport School	484	475	9	414	398	15	304	287	17
Newport School	436	429	7	379	356	23	255	213	42
Newport School	449	447	2	375	372	3	269	240	29
Newport School	457	459	-2	391	384	7	301	260	41
Newport School	427	435	-8	331	362	-30	167	222	-55
Newport School	433	451	-17	359	376	-17	204	246	-42
Newport School	422	446	-24	331	372	-41	186	239	-53

1.18 For the highest achieving third, five schools are above expectation and four below. For the middle and lower thirds six schools are above and three below in each case.

1.19 The same data represented in the same three groups. This shows the relatively high level of variance for Newport schools in the lowest third.



Literacy Measure – compared with the Family average

1.20 To put all these charts in perspective a difference of +/- 6 points is the equivalent of a GCSE grade difference for every learner. +/- 3 points would therefore be a half a grade difference.

School Name	Literacy Measure	Literacy Measure - Family	Literacy Measure - Difference
Newport School	46.6	38.9	7.7
Newport School	45.1	42.1	3.0
Newport School	39.7	37.6	2.1
Newport School	39.0	38.3	0.7
Newport School	43.3	43.4	0.0
Newport School	46.1	46.8	-0.7
Newport School	34.8	36.9	-2.0
Newport School	33.9	36.0	-2.1
Newport School	33.6	37.6	-4.0

1.21 Four schools are above the family average for the literacy measure, four below and one inline. The greatest variance is by approximately two thirds of a GCSE grade per learner below, up to over a grade above.

1.22 The table below gives the individual contribution of each of the GCSEs that contribute to this measure.

School Name	English Language	English Literature	Welsh First Language - Language	Welsh First Language - Literature
Newport School	45.1	43.9	-	-
Newport School	41.8	44.0	44.8	42.4
Newport School	37.5	40.5	-	-
Newport School	35.5	40.7	-	-
Newport School	41.3	42.6	-	-
Newport School	44.2	45.6	-	-
Newport School	32.8	36.0	-	-
Newport School	31.8	34.0	-	-
Newport School	32.9	25.9	-	-

1.23 All schools except two have a higher contribution made by literature rather than language.

Numeracy Measure – compared with the Family average

School Name	Numeracy Measure	Numeracy Measure - Family	Numeracy Measure - Difference
Newport School	43.9	36.3	7.6
Newport School	37.6	35.2	2.4
Newport School	43.2	41.5	1.8
Newport School	38.1	37.1	1.0
Newport School	35.7	35.2	0.5
Newport School	45.6	45.7	-0.1
Newport School	34.3	34.9	-0.5
Newport School	30.3	32.1	-1.8
Newport School	32.8	35.6	-2.8

1.24 For the numeracy measure five schools are above the family average, with four below. One school is above by over half a GCSE grade per learner.

1.25 The differences between the individual numeracy GCSE and mathematics GCSE are relatively small for each school.

School Name	Numeracy	Mathematics
Newport School	41.2	43.0
Newport School	34.0	36.4

Newport School	40.3	42.4
Newport School	35.5	36.2
Newport School	33.8	35.1
Newport School	42.9	44.4
Newport School	29.4	32.2
Newport School	27.2	29.0
Newport School	30.1	31.6

Science Measure – compared with the Family average

School Name	Science Measure	Science Measure - Family	Science Measure - Difference
Newport School	44.5	35.9	8.7
Newport School	35.0	32.8	2.2
Newport School	36.5	35.1	1.4
Newport School	38.7	37.5	1.2
Newport School	42.2	42.0	0.2
Newport School	34.2	35.1	-0.9
Newport School	28.6	30.2	-1.6
Newport School	44.2	46.0	-1.8
Newport School	32.9	36.0	-3.1

1.26 For the Science measure five schools are above their families (one by almost one and half a GCSE grade per learner), with four below.

Welsh Baccalaureate Measure – compared with the Family average

1.27 It is this measure which has the greatest variance, with some family averages are particularly low.

School Name	Welsh Bacc. Measure	Welsh Bacc. Measure - Family	Welsh Bacc. Measure - Difference
Newport School	44.0	30.6	13.4
Newport School	37.4	27.1	10.2
Newport School	33.6	25.5	8.0
Newport School	41.7	37.0	4.7
Newport School	39.5	36.6	2.9
Newport School	31.0	29.6	1.4
Newport School	28.6	29.9	-1.4
Newport School	17.2	27.1	-9.9
Newport School	0.0	25.2	-25.2

1.28 Six schools are above family averages and three below. One school did not enter any learners for this qualification.

No Qualifications – compared with the Family average

1.29 Please note the reversed colour coding on the bars to indicate that a negative difference from the family is positive.

School Name	No Qualifications (%)	No Qualificaitons (%) Family	No Qualificaitons (%) Difference
Newport School	0.0	0.6	-0.6
Newport School	0.0	0.4	-0.4
Newport School	0.0	0.3	-0.3
Newport School	0.0	0.3	-0.3
Newport School	0.0	0.3	-0.3
Newport School	0.0	0.1	-0.1
Newport School	0.4	0.4	0.1
Newport School	0.4	0.3	0.1
Newport School	0.6	0.4	0.2

1.30 Six Newport schools have ensured that all learners achieve a qualification. Two have approximately 4 in 1000 learners not achieving a qualification, and one has 6 in 1000 learners not achieving.

5+ A*-A – compared with the Family average

School Name	5+ A*-A (%)	5+ A*-A (%) Family	5+ A*-A (%) Difference
Newport School	38.0	17.3	20.6
Newport School	29.5	20.6	9.0
Newport School	32.2	28.7	3.6
Newport School	14.9	12.4	2.4
Newport School	12.0	12.4	-0.5
Newport School	11.2	13.5	-2.3
Newport School	8.3	10.6	-2.3
Newport School	10.2	15.0	-4.7
Newport School	34.0	42.1	-8.1

1.31 Nearly all schools 5+ A*-A rate is in line with their family average, apart from one school where it is almost double the family average and another school where it is almost 50% (9 percentage points) higher than the family.

Local Authority Aggregate Data

Key measures – Compared with Wales

1.32 Please note that these measures are not contextualised but compare with the Wales average.

Title	2023 - Newport	2023 - Wales
Capped 9 points score (interim)	358.3	358.1
WBacc Skills Challenge Certificate indicator – points score	28.5	31.6
Literacy indicator – points score	39.5	39.7
Numeracy indicator – points score	37.6	37.1
Science indicator – points score	36.8	36.9
No qualifications - % of pupils	1.3	1.4
5+ A*-A or equivalent	21.1	20.3

1.33 For nearly all measures except the Skills Challenge Certificate Indicator, the Newport average is approximately in line with the Wales average.

Key measures – Compared with ‘Modelled’ by FSM

1.34 Modelled expectations for each indicator are all above expectation indicated by Free School Meals. Please note that each table number is from the original data pack, not this report.

Title	2023 - Capped 9 points score (interim)	2023 - Modelled score	2023 - Difference
Newport	367.5	364.6	2.9

1.35 The Capped 9 score 2.9 points above below the modelled expectation. This is the equivalent of approximately 1/18th of a GCSE grade per learner.

Title	2023 - WBacc Skills Challenge Certificate indicator – points score	2023 - Modelled score	2023 - Difference
Newport	29.3	29.1	0.2

1.36 The Skills Challenge Certificate score is above expectation, by 0.2 points, the equivalent of 1/30th of GCSE (equivalent) grade per learner.

Title	2023 - Literacy indicator – points score	2023 - Modelled score	2023 - Difference
Newport	40.5	40.4	0.1

1.37 The literacy score is slightly above expectation at 0.1 points per learner.

Table 4.4 - KS4 Numeracy indicator - points score - LA Average

Title	2023 - Numeracy indicator – points score	2023 - Modelled score	2023 - Difference
Newport	38.5	37.4	1.1

1.38 The numeracy score is slightly above expectation, at 1.1 points per learner.

Table 4.5 - KS4 Science indicator - points score - LA Average

Title	2023 - Science indicator – points score	2023 - Modelled score	2023 - Difference
Newport	37.9	37.4	0.5

1.39 The science score is slightly above at 0.5 points, the equivalent of 1/12th of a GCSE grade per learner.

Capped 9 – Males and Females

Chart 3.1 - KS4 Capped 9 points score (interim) - points score - Males & Females average



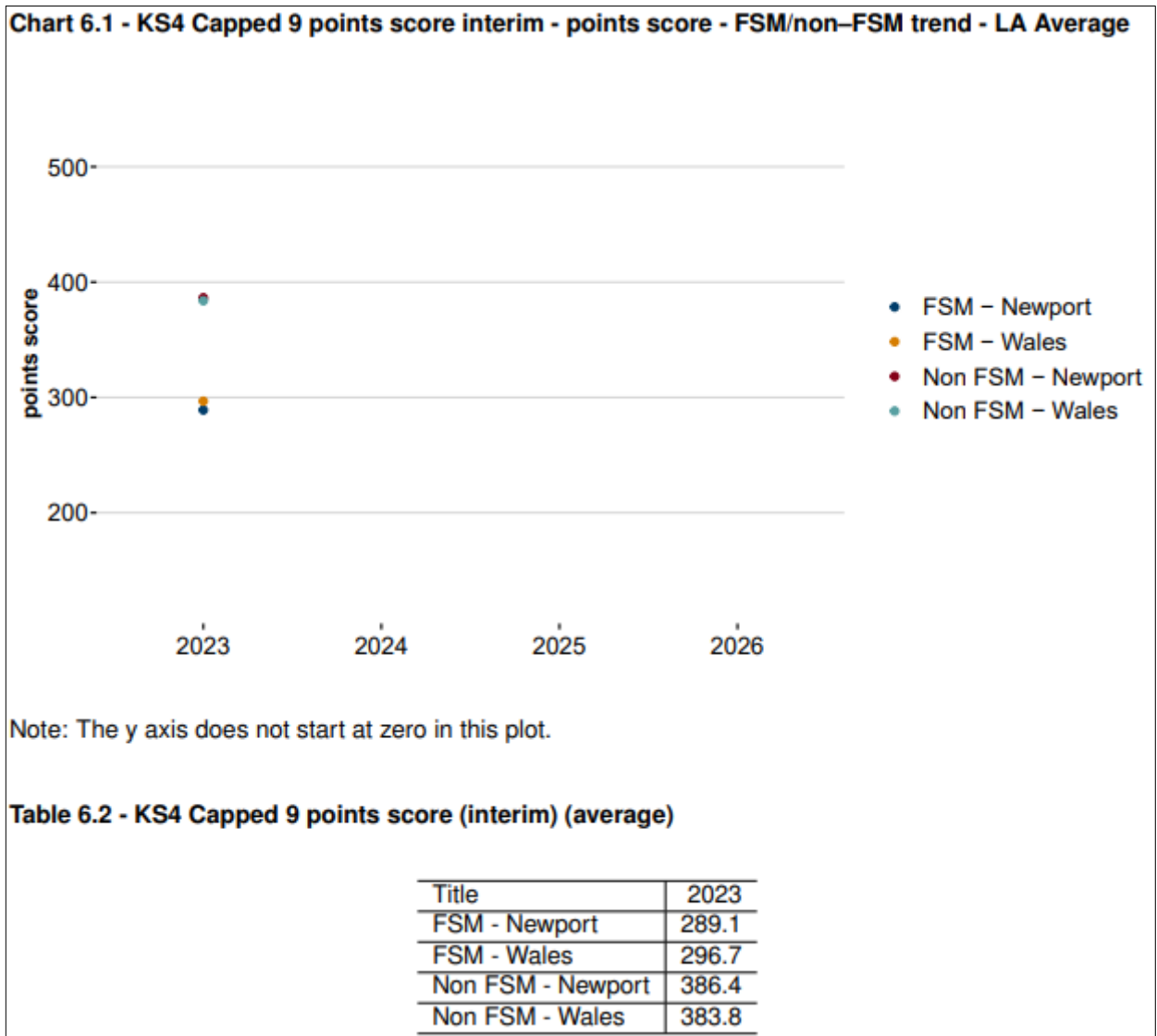
Note: The y axis does not start at zero in this plot.

Table 3.2 - KS4 Capped 9 points score (interim) (average)

Title	2023
Male - Newport	347.2
Male - Wales	346.4
Female - Newport	370.3
Female - Wales	370.5

1.40 Both Males and Females in Newport have almost identical scores to their peers across Wales, with the differences being very similar.

1.41 Capped 9 FSM – non-FSM



1.42 The outcomes for FSM learners in Newport are slightly below their peers in Wales. Outcomes for non-FSM learners in Newport are slightly higher than their peers in Wales.

Financial Summary (Capital and Revenue)

There are no financial implications to this report.

Risks

There are no risks identified to this report.

Links to Council Policies and Priorities

Newport City Council Corporate Plan 2022-27

Options Available and considered.

Non-applicable

Preferred Option and Why

Non-applicable.

Comments of Chief Financial Officer

There are no financial implications to this report.

Comments of Monitoring Officer

This report is for noting and discussion only and there are therefore no legal implications arising directly from it.

Comments of Head of People, Policy and Transformation

This report offers a new and fresh perspective for school achievement in Key Stage 4. Importantly the information provides a context against the 2019 Welsh Index of Multiple Deprivation (WIMD) and the Welsh Government 'Modelled outcome'. Both of which provide necessary insights into learner outcomes and welfare.

The information provided in this report should be monitored and used on an ongoing basis. This information should be used to ensure that the EAS Business Plan 2023-2025 is enabling and supporting schools to consider their individual demographic and needs.

Due to the nature of this report, there are no staffing issues arising and no associated FEIA.

Scrutiny Committees

This report will be presented at Performance Scrutiny on March 26th, 2024.

Fairness and Equality Impact Assessment:

Not required

Consultation

Not required

Background Papers

EAS Regional Business Plan 2023 – 2025

[Website Resources - EAS Regional Business Plan 2023-2025 June 23.pdf - All Documents \(sharepoint.com\)](#)

[Website Resources - EAS Regional Business Plan 2023-2025 June 23 \(Cymraeg\).pdf - All Documents \(sharepoint.com\)](#)

Dated: 2 April 2024