

Newport Replacement Local Development Plan

# Vision, Issues & Objectives Engagement - Participation

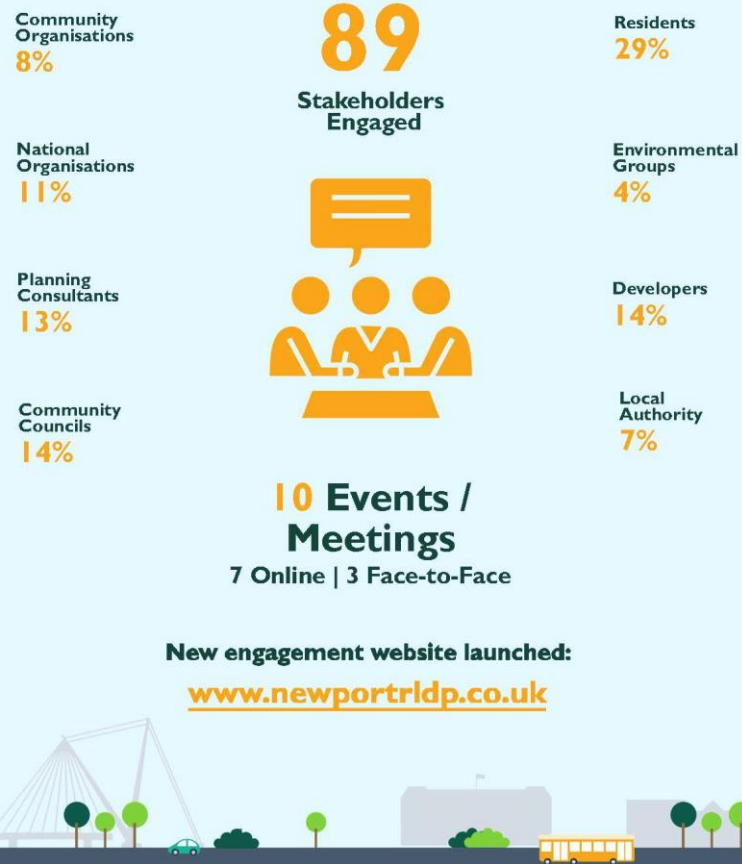


Figure 1: Summary VIO Engagement Participation

## Newport Replacement Local Development Plan

# Vision, Issues & Objectives Engagement - Feedback Summary

### Population & Communities

Don't create dormitory areas for commuters to Bristol and Cardiff.

Review settlement boundaries allow more housing in smaller settlements.

Provide local needs housing.

Brownfield sites important but recognise that greenfield sites are going to be needed.

More affordable housing, particularly to rent

Greenfield sites may allow more affordable housing provision. Brownfield sites can also be important biodiversity sites.

Need more gypsy and traveller sites including private sites and transit sites.

Geographical constraints on where large developments can be proposed.

High quality housing design including sufficient indoor and outdoor space.

### Health & Wellbeing

Lack of infrastructure such as services and community facilities for development.

### Transport & Movement

Transport infrastructure an issue. M4 congestion and back up on surrounding roads.

Need adequate public transport and active travel provision.

### Economy & Employment

Upskill workers and enhance opportunities.

Town and City centre regeneration: need a mix of uses – make them a destination / experience and not just retail.

Use vacant office space more flexibly.

The area is 70 % rural - consider the needs of changing agricultural policy.



### Biodiversity & Geodiversity

Gwent Levels should be protected.

Solar farms are an issue of concern.

Need to preserve, enhance and increase green spaces within towns.

### Equality, Diversity, and Inclusion

No objections to the draft objectives. Many felt this would be achieved through other objectives.

### Historic Environment

Importance of heritage matters, need to enhance and use as a catalyst for development and town centre regeneration.

### Natural Resources

The LDP should look to safeguard natural resources within the Council area.

An available supply of materials (e.g. aggregates) is assumed and should be considered in LDP policies in relation to new development.

The supply of minerals is more than a local issue and needs to be safeguarded.

### Landscape

No specific objections raised - many of the comments in relation to other objectives reflected views on landscape.

It was important to safeguard the quality of the landscape and new development should reflect this.

### Climate Change

Consensus on the importance of the effects of climate change.

LDP to have regard to the Climate Emergency and the requirements of The Well-being of Future Generations Act.



